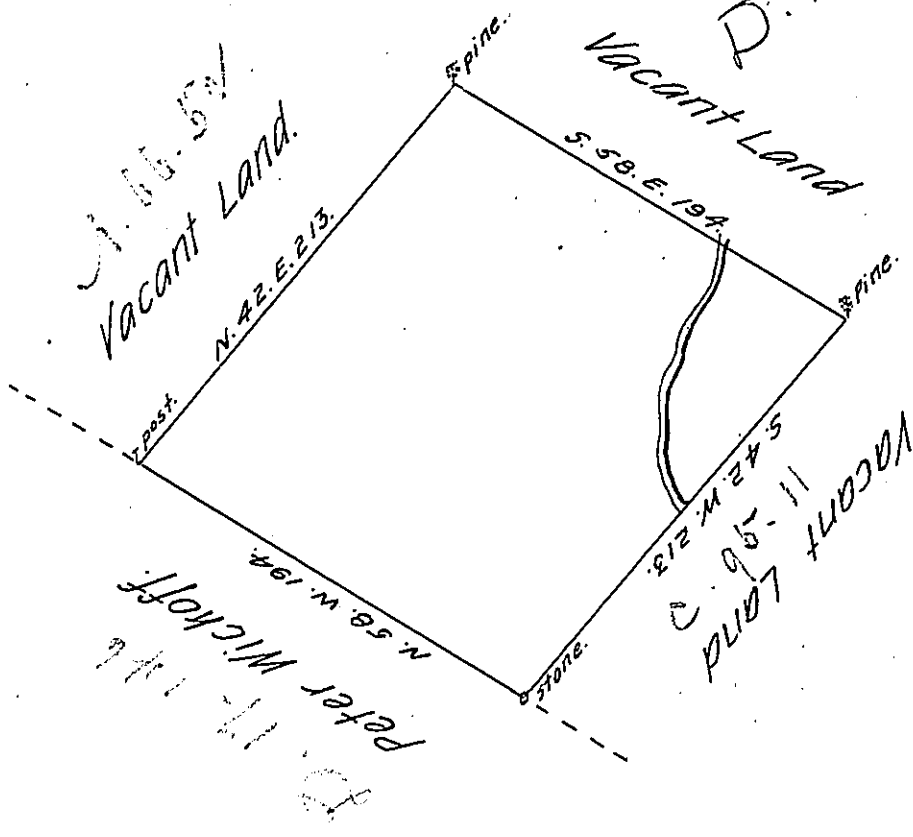


(E.) Mauch Chunk CARBON. ✓



By virtue of an Application dated the 29<sup>th</sup> July 1767. Surveyed the 14<sup>th</sup> February 1783, to John Kern the above described tract of Land situate on the West side of Lehi, at a place known by the name of the Kittle, a little below the Turn-hole in the River, in Towamensing township, Northampton County, containing two hundred and thirty-nine Acres, one hundred and fifty perches & the allowance of six & Cent &

Geo. Palmer, D.S.

To Jacob Spangler, Esquire,  
Surveyor General.

IN TESTIMONY that the above is a copy of the original remaining on file in the Department of Internal Affairs of Pennsylvania, made conformably to an Act of Assembly approved the 16th day of February, 1833, I have hereunto set my Hand and caused the Seal of said Department to be affixed at Harrisburg, this fourteenth day of September 1905.

*George Brown*  
Secretary of Internal Affairs.